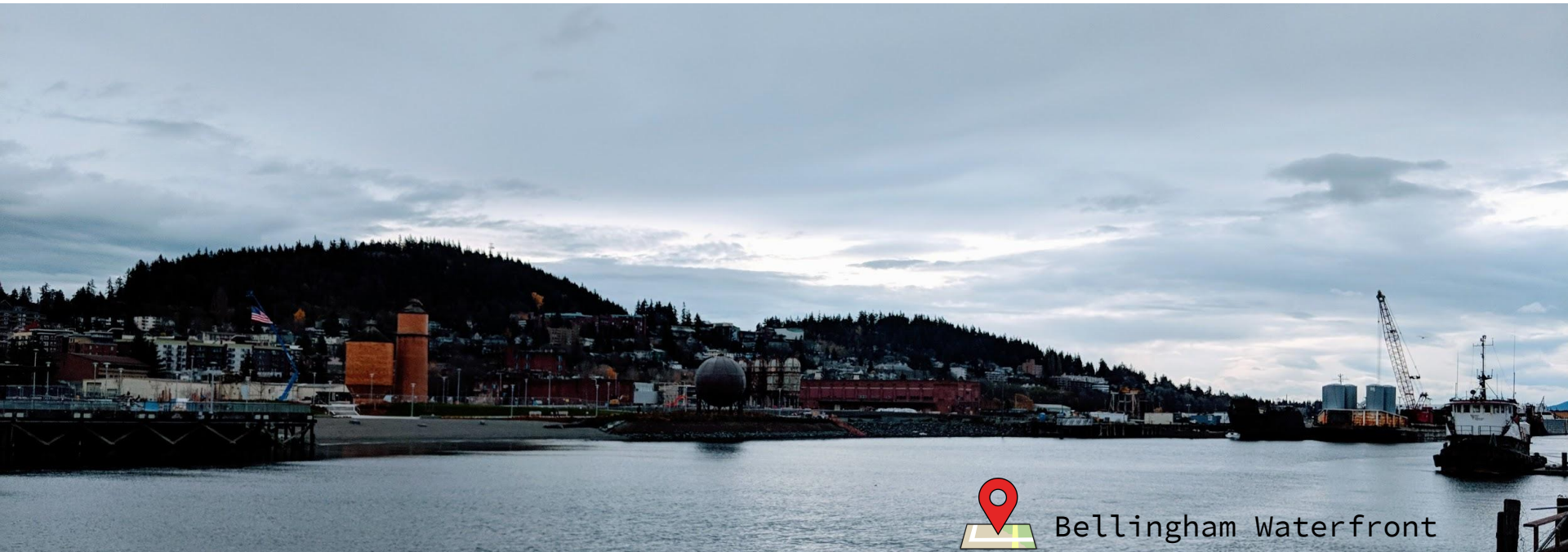


FROM RUST TO ROBUST

By Keanan Albrecht

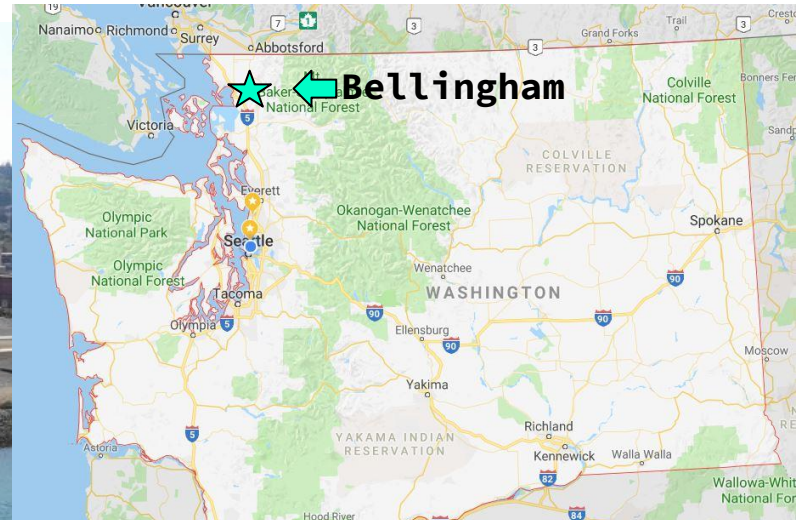


Bellingham Waterfront

MY RESEARCH QUESTION

How have post-industrial redevelopment projects across the country affect their cities?

What lessons from these projects can be applied to the City of Bellingham waterfront redevelopment?



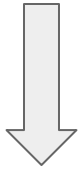
WHAT IS POST-INDUSTRIAL REDEVELOPMENT?

- ❖ Sites that have utilized old industrial spaces to give new uses to those buildings or landscapes
- ❖ Ex: Gasworks Park



WHAT IS HAPPENING IN BELLINGHAM?

❖ Georgia
Pacific
Papermill

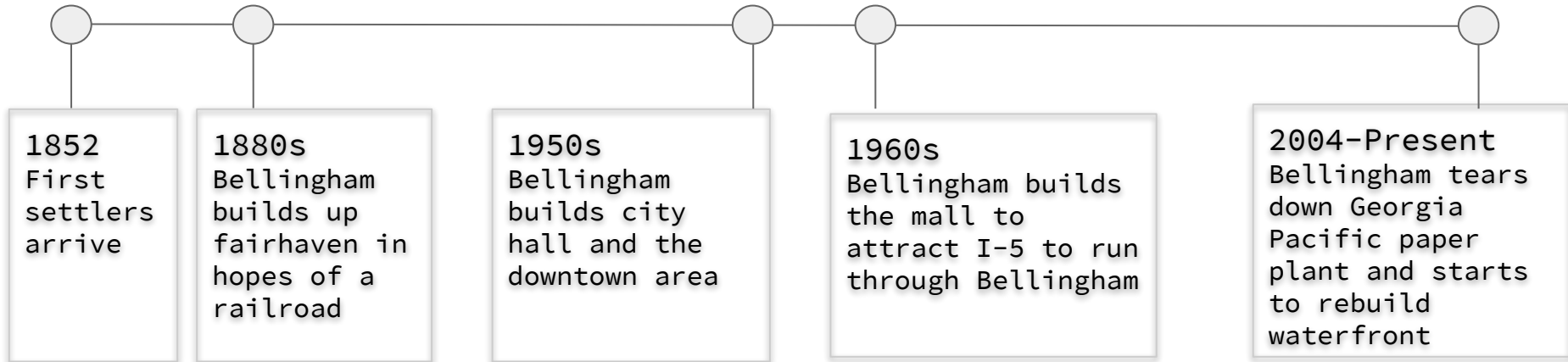


❖ Brand New
Waterfront
Redevelopment



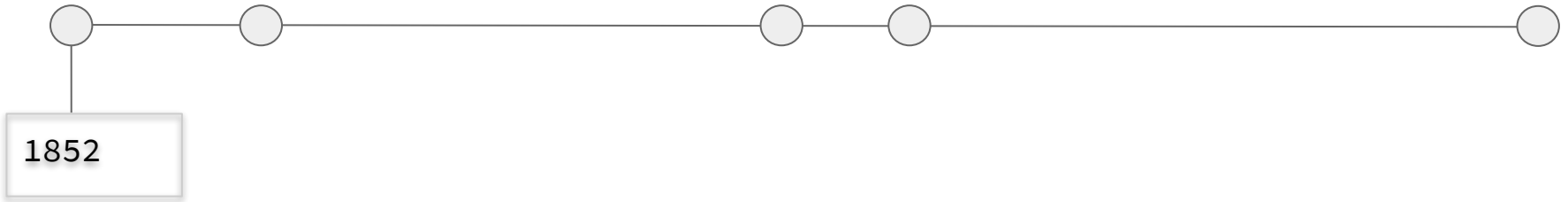
A BELLINGHAM DEVELOPMENT TIMELINE

❖ Some events to put the waterfront redevelopment in perspective



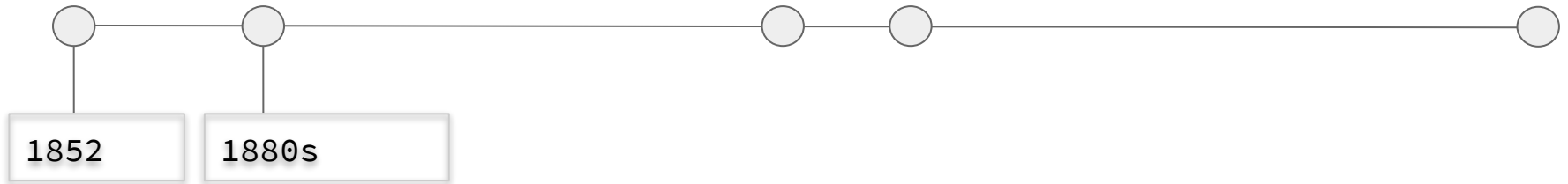
1852- THE FIRST SETTLERS ARRIVE

- ❖ Settlers arrive at the mouth of the Whatcom Creek looking for lumber
- ❖ They discovered the Douglas-Firs and Cedars and built a sawmill



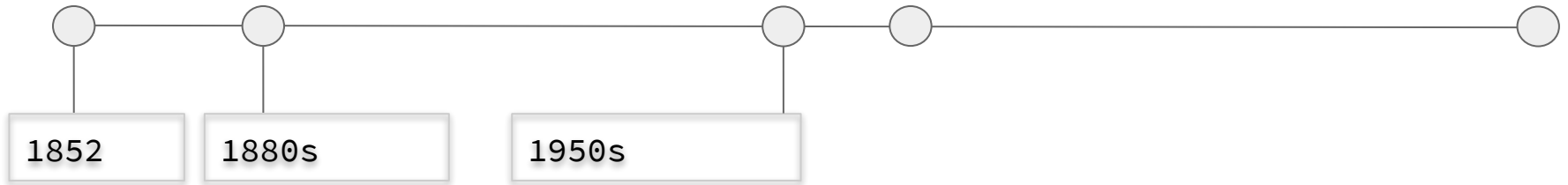
1880S- BELLINGHAM BUILDS UP FAIRHAVEN

- ❖ In hopes to be part of the Transcontinental Railway Line, Bellingham Built up fairhaven
 - Quick Development
 - Small downtown



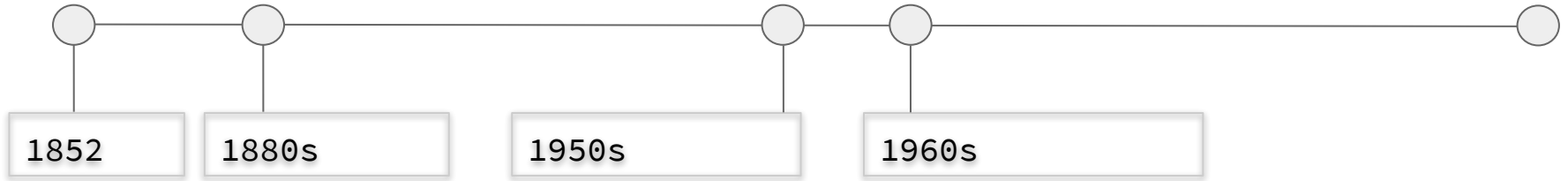
1950s- BELLINGHAM BUILDS CITY HALL

- ❖ Bellingham Builds City Hall
- ❖ Development of the Current Central Business District



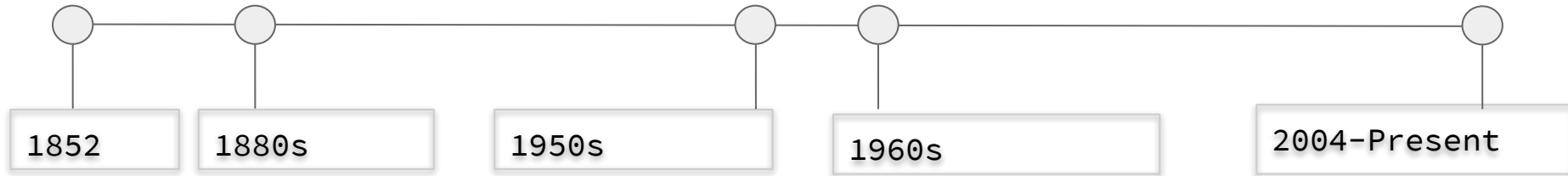
1960s- BELLINGHAM BUILDS A MALL

- ❖ In hopes of attracting I-5 to Bellingham
- ❖ Bellingham was suburbanizing in the 1960s



2004- PRESENT- WATERFRONT REDEVELOPMENT

- ❖ Creating new waterfront commercial and residential space
- ❖ Connecting the waterfront and central business district
- ❖ Opportunity to bring in new Business to Bellingham



CASE STUDIES (METHODS)

- ❖ Four Case studies
 - Bethlehem Steel Stacks - Bethlehem, PA
 - Gasworks Park - Seattle, WA
 - The Steel Yard - Providence, RI
 - The Highline - New York City, NY
- ❖ What can we learn from these different sites?



The Steel Stacks



Gasworks Park



The Steel Yard



The Highline

BETHLEHEM STEEL STACKS - LESSONS

- ❖ Draws in residents from outside Bethlehem, PA without community in mind
- ❖ Created a very corporate space



THE HIGHLINE- LESSONS

- ❖ Over development along trailway
- ❖ Becoming a tourist trap instead of a mode of transportation



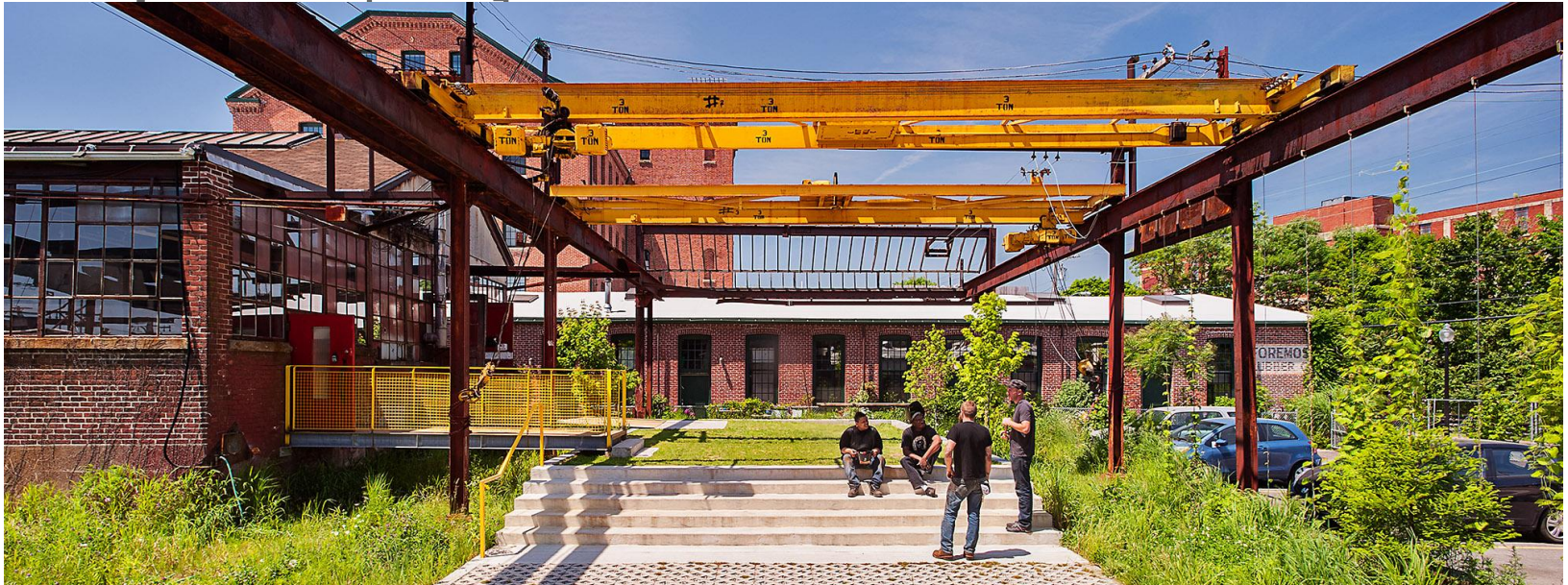
GASWORKS PARK- LESSONS

- ❖ How a project can become a staple of a city
- ❖ Gasworks park helped to shape surrounding neighborhoods
- ❖ How an area can attract big tech companies



THE STEEL YARD- LESSONS

- ❖ Taking away blue collar jobs from the area
- ❖ False promises of affordable housing from



WHAT I LEARNED

- ❖ Development plans change vastly from start to finish
- ❖ Community involvement is difficult to incorporate in redevelopment projects
- ❖ Redevelopment brings new people and business

REFERENCES

Bliss, Laura. 2017. "The Highlines Next Balancing Act." *City Lab*, February 7.

Gibson, Eleanor. 2017. "High Line creators launch website to advise on avoiding gentrification." *De zeen*, June 22.

Green, Sarah Jean. 2007. "Tissue mill's closing ends era for Bellingham." *The Seattle Times*, December 21.

Hill, John. 2016. "Neighborhood of the Week: Mills anchor reinvention of Providence's Valley." *Providence Journal*, October 13.

Jacobs, Karrie. 2017. "The High Line Network Tackles Gentrification." *Architecture Magazine*, October 17.

Langhorst, Joern. 2015. "Rebranding the Neoliberal City: Urban Nature as Spectacle, Medium, and Agency." *AMPS: Architecture, Media, Politics, Society* 15.

Lieb, Emily. 2006. *History Link*. 8 20. Accessed October 23, 2018. <http://www.historylink.org/File/7904>.

REFERENCES CONTINUED

Loures, Louis. 2015. "Post-industrial landscapes as drivers for urban redevelopment: Public versus expert perspectives towards the benefits and barriers of the reuse of post-industrial sites in urban areas." *Habitat International* 10.

Moss, Jeremiah. 2012. "Disney World on the Hudson." *The New York Times*, August 21.

Motoko Rich, David Leonhardt. 2005. "Shaking Off the Rust, New Suburbs Are Born." *New York Times*, December 22.

Port of Bellingham, City of Bellingham. 2013. "The Waterfront District Sub Area Plan." *City of Bellingham*. Accessed October 23, 2018. <https://www.cob.org/documents/planning/urban-villages/waterfront/waterfront-final-subarea-plan.pdf>.

Rud, Jon. 2018. "After 12 years of more talk than action, work on Bellingham's central waterfront is finally underway." *The Seattle Times*, December 6.

Zabronsky, Katie. 2015. "PPL center sparks debate on gentrification." *The Brown and White*, March 26.